

# Regulation of transbilayer plasma membrane phospholipid asymmetry

David L. Daleke<sup>1</sup>

Medical Sciences Program, Department of Biochemistry and Molecular Biology,  
Indiana University School of Medicine, Bloomington, IN 47405

**Abstract** Lipids in biological membranes are asymmetrically distributed across the bilayer; the amine-containing phospholipids are enriched on the cytoplasmic surface of the plasma membrane, while the choline-containing and sphingolipids are enriched on the outer surface. The maintenance of transbilayer lipid asymmetry is essential for normal membrane function, and disruption of this asymmetry is associated with cell activation or pathologic conditions. Lipid asymmetry is generated primarily by selective synthesis of lipids on one side of the membrane. Because passive lipid transbilayer diffusion is slow, a number of proteins have evolved to either dissipate or maintain this lipid gradient. These proteins fall into three classes: 1) cytofacially-directed, ATP-dependent transporters (“flippases”); 2) exofacially-directed, ATP-dependent transporters (“floppases”); and 3) bidirectional, ATP-independent transporters (“scramblases”). The flippase is highly selective for phosphatidylserine and functions to keep this lipid sequestered from the cell surface. Floppase activity has been associated with the ABC class of transmembrane transporters. Although they are primarily nonspecific, at least two members of this class display selectivity for their substrate lipid. Scramblases are inherently nonspecific and function to randomize the distribution of newly synthesized lipids in the endoplasmic reticulum or plasma membrane lipids in activated cells. It is the combined action of these proteins and the physical properties of the membrane bilayer that generate and maintain transbilayer lipid asymmetry.—Daleke, D. L. Regulation of transbilayer plasma membrane phospholipid asymmetry. *J. Lipid Res.* 2003. 44: 233–242.

**Supplementary key words** flippase • floppase • scramblase • phosphatidylserine

The transbilayer distribution of lipids across biological membranes is asymmetric (1). The choline-containing lipids, phosphatidylcholine (PC) and sphingomyelin (SM), are enriched primarily on the external leaflet of the plasma membrane or the topologically equivalent luminal leaflet of internal organelles. In contrast, the amine-con-

taining glycerophospholipids, phosphatidylethanolamine (PE) and phosphatidylserine (PS), are located preferentially on the cytoplasmic leaflet. Other minor phospholipids, such as phosphatidic acid (PA), phosphatidylinositol (PI), phosphatidylinositol-4-monophosphate (PIP), and phosphatidylinositol-4,5-bisphosphate (PIP<sub>2</sub>), are also enriched on the cytofacial side of the membrane. This lipid asymmetry has been most well-characterized in the erythrocyte membrane, the outer monolayer of which contains 75–80% of the PC and SM, 20% of the PE, PA, PI, and PIP<sub>2</sub>, and no detectable PS or PIP (2–6) [methods for measuring transbilayer lipid asymmetry have been reviewed recently (7)]. The distribution of glycosylsphingolipids, another significant membrane component, favors the external leaflet of the plasma membrane (8).

Loss of transmembrane phospholipid asymmetry, with consequent exposure of PS in the external monolayer, occurs in both normal and pathologic conditions. PS externalization is induced early in the process of apoptosis (9) and during platelet activation (10). This perturbation results in a change in cell surface properties, including conversion to a procoagulant state (11), increased adhesion (12), increased aggregation (13), and recognition by phagocytic cells (14, 15). While these processes are essential for normal cell development and hemostasis, unregulated loss of PS asymmetry may contribute significantly to heart disease and stroke and has been associated with diseases that have high cardiovascular risk, such as diabetes (16, 17).

A number of recent reviews contain excellent discussions of lipid asymmetry (18), lipid transporters (19–21), and the consequences of a loss of asymmetry (22, 23). This review will describe the role of transbilayer lipid transporters, with emphasis on their substrate specificity

Abbreviations: flippases, ATP-dependent transporters; floppases, ATP-dependent transporters; Glc-Cer, glucosylceramide; NBD, 7-nitrobenz-2-oxa-1,3-diazol-4-yl; PA, phosphatidic acid; PC, phosphatidylcholine; PE, phosphatidylethanolamine; PI, phosphatidylinositol; PIP, phosphatidylinositol-4-monophosphate; PIP<sub>2</sub>, phosphatidylinositol-4,5-bisphosphate; PS, phosphatidylserine; scramblases, ATP-independent transporters; SM, sphingomyelin.

<sup>1</sup> To whom correspondence should be addressed.  
e-mail: daleked@indiana.edu

Manuscript received 25 November 2002 and in revised form 10 December 2002.

Published, JLR Papers in Press, December 16, 2002.  
DOI 10.1194/jlr.R200019JLR200

Copyright © 2003 by Lipid Research, Inc.

This article is available online at <http://www.jlr.org>

in the maintenance of lipid asymmetry across the bilayer of the plasma membrane.

#### GENERATION OF TRANSMEMBRANE LIPID ASYMMETRY

Lipid biosynthesis is inherently asymmetric. The enzymes responsible for lipid synthesis are localized typically only on the one side of the membrane in which biosynthesis occurs. For the major glycerophospholipids (PS, PE, PC, and PI), *de novo* synthesis occurs on the cytosolic side of the endoplasmic reticulum (ER) (24). With the exception of PC, this places the newly synthesized lipids on the side of the membrane in which they are ultimately enriched in the plasma membrane. Because of the thermodynamic barrier to spontaneous transbilayer movements, these lipids should remain enriched on the cytoplasmic side of the membrane, provided that there is no perturbation to the membrane. However, the asymmetric addition of newly synthesized phospholipids to one leaflet of the bilayer generates an unstable membrane. Accumulation of lipid on one side of the membrane can induce membrane bending and consequent membrane shape changes (25–27). In addition, evidence indicates that ER and Golgi membranes may be less asymmetric than the plasma membrane (28). These problems are rectified by the presence of a lipid transporter that redistributes ER phospholipids across the membrane (29–32). Although *de novo* glycerophospholipid synthesis is asymmetric, the action of this transporter defeats vectorial biosynthesis and results in a more random distribution of lipids across the bilayer.

Sphingolipids are localized predominately on the external leaflet of the plasma membrane. Unlike PC synthesis, sphingolipid synthesis occurs predominantly on the side of the membrane in which these lipids ultimately reside. With the exception of glucosylceramide (Glc-Cer), which is synthesized on the cytofacial side of the Golgi, all of the sphingolipids are synthesized on the luminal surface of the ER or Golgi, including SM, galactosylceramide, and complex sugar-linked sphingolipids (8, 33, 34). Because Glc-Cer is a precursor of many glycosylsphingolipids, a mechanism must exist to transport this lipid to the luminal surface of the ER or Golgi. A transporter that catalyzes the transbilayer movement of short-chain analogs of Glc-Cer has been discovered (35, 36) that may serve this function.

The selective accumulation of glycerophospholipids on one side of the plasma membrane requires that during, or as a result of, membrane trafficking from the ER to the plasma membrane that the transbilayer randomizing process be inhibited or that an asymmetry-generating process be activated. Thermodynamic considerations require an input of energy to generate, or to maintain, a transbilayer lipid gradient. Both inward and outward ATP-dependent lipid transport activities have been discovered that selectively move lipids across the plasma membrane. The asymmetric distribution of phospholipids in the plasma mem-

brane may be the result of the selective trafficking or regulation of lipid transporting proteins. The retention of ATP-independent nonselective lipid transporters in the ER, combined with the trafficking of substrate-specific ATP-dependent transporters to the plasma membrane may account for the creation of a highly asymmetric plasma membrane from the more symmetric ER and Golgi membranes. Alternatively, lipid randomizing and asymmetry generating lipid transporters may coexist in multiple membranes, but be differentially regulated. Discrimination between these models awaits the positive identification, verification of intracellular location, and characterization of the biochemical regulation of these transporters.

#### MAINTENANCE OF PLASMA MEMBRANE LIPID ASYMMETRY BY LIPID TRANSPORTERS

Once lipid asymmetry has been established, it is maintained by a combination of slow transbilayer diffusion, protein-lipid interactions, and protein-mediated transport. The presence of binding sites for acidic lipids, including PS, on the cytoskeletal proteins spectrin and band 4.1 (37–39) and soluble membrane-binding proteins such as annexins (40) suggest that cytofacial protein-membrane interactions may play a role in sequestering PS in the cytofacial monolayer. Indeed, lipid-symmetric membranes bind cytoskeletal proteins more poorly than lipid-asymmetric membranes at low ionic strength and have lower mechanical stability (41). However, the number and magnitude of the available binding sites is not sufficient to trap PS (42–45). In addition, spectrin-depleted membranes (46) and pathologic cells with defective or deficient cytoskeletal proteins (47, 48) are capable of generating and maintaining a PS gradient. These data indicate that, although the plastic properties of the erythrocyte membrane require close association with cytofacial lipids, this interaction does not play a major role in the maintenance of lipid asymmetry.

The thermodynamic barrier to passive lipid flip-flop prevents rapid spontaneous transbilayer diffusion of phospholipids. The half time for phospholipid flip-flop is approximately several hours to days (49) and depends on the nature of the lipid and the membrane. In the human erythrocyte, flip-flop rates are dependent on phospholipid acyl chain length and degree of unsaturation (50–52). Considering that the half time of flip is much shorter than the average lifespan of most cell types, it is unlikely that this phenomenon could account for the maintenance of phospholipid asymmetry. Other perturbations to membrane structure may induce a rapid reorientation of lipids. For example, chronic *in vitro* hyperglycemia (17) or diabetes (53) induces the exposure of inner monolayer lipids on the surface of the erythrocyte plasma membrane and may contribute to the vascular damage associated with this disease (54). Although the barrier to rapid spontaneous flip-flop contributes to the maintenance of lipid asymmetry, other mechanisms must be responsible for the

regeneration of lipid asymmetry or the activation-induced rapid loss of asymmetry.

Perhaps the most significant contributors to the maintenance and dissipation of transbilayer lipid asymmetry are proteins that catalyze the movement of lipids across the membrane (Table 1). These activities are classified according to substrate specificity, requirements for energy, and direction of transport (Fig. 1). Two classes of transport activities have been described that are responsible for the ATP-dependent transport of lipids. The most well-characterized activity is the aminophospholipid translocase or "flippase," which transports PS from the outer monolayer to the cytoplasmic surface of the plasma membrane. A second ATP-dependent activity, catalyzed by "floppases," transport lipids in the opposite direction. The most well-characterized floppase activities have been shown to catalyze the inner-to-outer monolayer transport of short-chain fluorescent lipids and the selective efflux of PC or cholesterol. Three ATP-independent and relatively nonspecific scramblase activities have been reported; a plasma membrane  $\text{Ca}^{2+}$ -activated transporter, an ER glycerophospholipid-specific transporter, and an ER monohexosyl-lipid transporter.

The ultimate transbilayer distribution of lipids is determined by the specificity of the lipid transporters located in the membrane. Each of the transport activities described above displays a unique specificity or nonspecificity that defines its function in the determination of lipid organization. A number of excellent reviews have surveyed the subject of lipid transporters recently (7, 18, 19, 21). The following summarizes the current state of knowledge regarding the specificity of these transport activities and, where evidence is available, the protein(s) involved.

## FLIPPASES

Aminophospholipid flippase activity was first reported by Devaux and coworkers who measured the ATP-dependent uptake of spin-labeled lipid analogs in human erythrocytes (55). Phospholipids labeled with fluorescent fatty acids, particularly 7-nitrobenz-2-oxa-1,3-diazol-4-yl (NBD) derivatives, have also been used extensively to study this transporter (56–58). The addition of these polar, bulky substituents to the fatty acid component of lipids may potentially alter transporter-lipid interactions, thus questioning whether movements measured with these lipids reflect

the behavior of endogenous lipids. These spin and fluorescent probes are powerful tools, but their use requires careful interpretation (59, 60) and independent verification that their movements reflect those of endogenous lipids. In addition to spin-labeled and fluorescent lipids, native and radiolabeled short (25, 61, 62) and long (63) chain fatty acid-containing species have been used to measure flippase activity. The use of these lipids is more difficult and restricted, but their behavior may reflect more accurately the behavior of endogenous lipids.

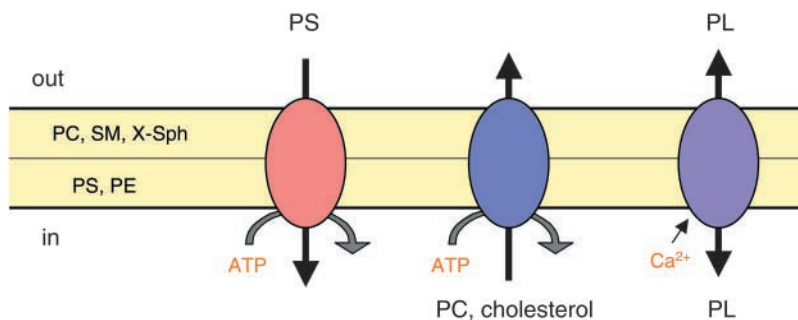
Flippase-catalyzed transport is linked to an ATPase; transport activity requires ATP (25, 55) and  $\text{Mg}^{2+}$  (61, 64) and is inhibited by vanadate (55). The stoichiometry of transport is approximately 1 ATP consumed per lipid transported (65). Flippase activity is sensitive to temperature and to a number of nonspecific reagents, including sulfhydryl oxidizing and alkylating agents (25, 66), and histidine reagents (67). Flippase activity is also inhibited by  $\text{Ca}^{2+}$  (25, 64), indicating that the activity of this enzyme may be regulated in activated cells.

The flippase is widely distributed and is present in most plasma membranes. Aminophospholipid flippase activity is ubiquitously expressed in erythrocytes (68) and has been detected in a wide variety of cell types and membranes, including platelets (25, 69), lymphocytes (70), aortic endothelial cells (71), fibroblasts (57, 72, 73), pheochromocytoma cells (74), hepatocytes (75), spermatozoa (76), synaptosomes (77), and chromaffin granules (78). Activity is present at both the apical and basolateral surfaces of polarized epithelial cells (79). It is likely that this transporter is essential for any membrane in which the maintenance of PS asymmetry is required.

The aminophospholipid flippase is perhaps the most selective of the lipid transporters. It prefers PS over other lipids (25, 55), and the specificity for PS is defined by each of the functional groups of the lipid (Fig. 2). The amine group is absolutely required; phosphatidylhydroxypropionate, a PS analog without an amino group, is not a substrate for transport (80). The enzyme can tolerate monomethylation of PS (80) and, to a limited extent, PE (81). However, progressive methylation of PE reduces transport significantly (81). The carboxyl group is not essential (PE is also a transport substrate), but its absence lowers the rate of transport approximately 10-fold (82), and methyl esterification of the carboxyl group reduces transport activity significantly (80, 81). In contrast to other PS-specific proteins, such as protein kinase C (83)

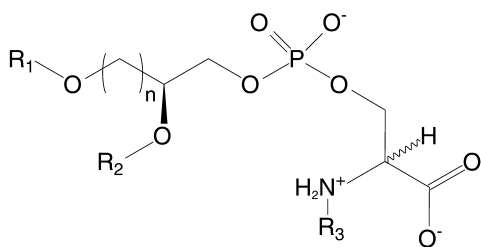
TABLE 1. Lipid specificity of transbilayer lipid transporters

Class	Protein	Specificity	Reference
Flippases	$\text{P}_4$ -ATPases	amphipaths	(102, 103)
	erythrocyte $\text{Mg}^{2+}$ -ATPase	PS	(94)
	ABCR	<i>N</i> -retinylidene-PE	(137)
Floppases	ABCA1	cholesterol	(117–119)
	ABCB1	none	(123)
	ABCB4	PC	(123)
	ABCC1	short-chain phospholipids	(133)
	PLSCR1	none	(149)
Scramblases	ER flippase	none	(29–32)



**Fig. 1.** Schematic representation of the action of transbilayer transporters in the eucaryotic plasma membrane. Phosphatidylcholine (PC), sphingomyelin (SM), and sugar-linked sphingolipids (X-Sph) are enriched in the outer monolayer, while phosphatidylserine (PS) and phosphatidylethanolamine (PE) are sequestered on the cytoplasmic monolayer. This distribution is maintained by (left) an inwardly directed PS flippase. In some tissues an outwardly directed PC or cholesterol floppase (middle) is responsible for the efflux of these lipids. A nonspecific,  $\text{Ca}^{2+}$ -stimulated scramblase (right) randomizes phospholipid (PL) distribution in activated cells.

and the macrophage PS receptor (84, 85), the stereochemistry of the L-serine headgroup is unimportant for recognition by the flippase; both the D- and L-serine isomers are transported equally well (80, 81, 86). The glycerol backbone is another important recognition element. Although diacylglycerophosphoserine is the preferred substrate, 1,3,4-butanetriol analogs are transported with similar rates (87). Sphingolipid (81) and diether analogs (88) of PS are also recognized as transport substrates, but transport rates are reduced compared with diacylglycerophosphoserine. This indicates that there is some flexibility in lipid backbone recognition by the enzyme. However, the enzyme displays an absolute requirement for the stereochemistry of the glycerol backbone; the *sn*-2,3-glycerol analog of the naturally-occurring *sn*-1,2-glycerolipid is not a substrate for transport (72, 80). In contrast to the polar headgroup specificity, the flippase is capable of accepting PS molecules containing fatty acids of various lengths and composition, including spin, fluorescent, and photoactivatable groups (25, 55, 58, 59, 63, 89–91), but prefers reporter groups attached to longer acyl chains (58, 59). Using an endocytosis mutant, Nichols recently demonstrated a similar ATP-dependent transport activity in yeast, although NBD-PC was transported in addition to NBD-PE (92, 93). The relationship between this protein and the aminophospholipid flippase is not yet clear.



**Fig. 2.** Structural determinants of substrate specificity by the aminophospholipid flippase.  $R_1$ ,  $R_2$  = acyl preferred, but alkyl accepted; length and unsaturation independent; fluorescent, spin label, and photoaffinity groups also accepted;  $R_3$  = H or methyl;  $n$  = 1–2.

The identity of the aminophospholipid flippase remains elusive. Attempts at direct purification of the protein from erythrocytes based on the biochemical properties listed above have yielded preparations with varying characteristics [for review see Daleke and Lyles (94)]. However, the ATPase activity of these candidate erythrocyte flippases are stimulated specifically by *sn*-1,2-glycerophosphoserine (80, 94, 95). One of these PS-stimulated  $\text{Mg}^{2+}$ -ATPases has been reconstituted and demonstrated to transport PS (96).

Another candidate flippase (ATPase II) has been purified and cloned from bovine chromaffin granules (97–99). Close homologs of this protein have been identified from bovine brain (100) and human [ATP8A1 (101)] sources. These proteins are members of a new class of P-type ATPases, the  $\text{P}_4$ -ATPases (99, 102, 103). Defects in genes of this family produce alterations in ribosomal assembly [Drs2 (104, 105)], cold sensitivity in plants [ALA1 (106)], and familial intrahepatic cholestasis [ATP8B1, FIC1 (107)]. Although some controversy exists regarding whether Drs2 is a flippase (105, 108) it is widely believed that the  $\text{P}_4$ -ATPase family are lipid transporters. Like the erythrocyte  $\text{Mg}^{2+}$ -ATPase, the ATPase activity of these enzymes is selectively activated by PS (98, 100, 109). Recent evidence also indicates that another member of this family (ATP10C) may be associated with Angelman syndrome, a neurological disorder in humans (110), and fat metabolism in mice (111). Although no direct evidence for transbilayer phospholipid transport has been reported, it is likely that the  $\text{P}_4$ -ATPases are involved either directly or indirectly in amphipath transport. Whether this activity participates in the maintenance of transmembrane asymmetry remains to be resolved. The high degree of specificity that the flippase demonstrates for its substrate should enable the eventual positive identification of this protein.

## FLOPPASES

The second class of ATP-dependent lipid transporters is the exofacially-directed floppases. Early studies in red

blood cells revealed a nonspecific outward flux pathway for NBD- and spin-labeled lipids (67, 112). It was recognized subsequently that some members of the ABC transporter superfamily are also capable of transporting lipids [for recent reviews see (19, 20)].

ABC transporters are a diverse group of proteins that, in general, are responsible for the ATP-dependent export of amphipathic compounds. These include the multidrug resistance proteins, which export cytotoxic xenobiotics and were first discovered in drug-resistant tumor cells. Multidrug resistance proteins are also present in yeast and some members of this subfamily (*C. albicans* CDR1, CDR2, CDR3) have been shown to be lipid transporters (113, 114). ABC transporters are also widely expressed in prokaryotes. One of these proteins, MsbA, is an inner membrane transporter involved in lipid A export to outer membrane (115). The ATPase activity of purified MsbA is selectively activated by hexacetylated lipid A (116).

Consistent with their role in general xenobiotic amphipath export, ABC proteins are, for the most part, nonspecific. However, some members of this class demonstrate a unique specificity for their respective substrate. The most well-characterized lipid floppase activities are those catalyzed by ABCA1, ABCB1, ABCB4, and ABCC1.

The ABC transporter ABCA1 (ABCI) has been shown to transport cholesterol out of cells for collection by HDL. ABCA1 is defective in Tangier's disease (117–119), an autosomal recessive disorder characterized by low HDL levels and peripheral accumulation of cholesterol. ABCA1 has also been linked to PS transport (120, 121) and is required for macrophage engulfment of prey in *C. elegans* (122). This transporter may act as a floppase for both cholesterol and PS. Whether cholesterol and PS transport are linked is unclear, but this protein likely serves an efflux function, and is not involved in the maintenance of lipid asymmetry.

ABCB1 (MDR1) is a ubiquitous multidrug resistance xenobiotic transporter and is a lipid transporter of broad specificity. In LLC-PK1 epithelial cells, it catalyzes the efflux of NBD or short-chain PC, PE, SM, Glc-Cer, and Gal-Cer (123), but not NBD-PS (124), and may also function to facilitate the movement of platelet activating factor to the cell surface (125). The reconstituted enzyme is similarly nonspecific but, in contrast to ABCB1 in situ, also transports NBD-PS (126). The lack of specificity exhibited by ABCB1 makes it unlikely to be a regulator of transbilayer lipid asymmetry. Instead, transport of these NBD-labeled lipids may reflect nonspecific xenobiotic recognition by ABCB1.

ABCB4 (MDR3, mMdr2) is a selective PC transporter (123). Mice homozygous for a disruption in the mMdr2 gene do not secrete phospholipid into the bile and, as a result, develop liver disease (127). Secretory vesicles isolated from yeast transfected with mMdr2 are capable of ATP-dependent, vanadate-sensitive uptake of short-chain fluorescent PC (128). Further confirmation of the role of this enzyme as a PC transporter was the demonstration of ATP-dependent PC transport, but not PE transport, in bile canalicular membranes vesicles (129). In keeping with its role in bile formation, the tissue distribution of ABCB4 is restricted to the liver and bile canalicular membrane (127,

130). Like ABCA1 and ABCB1, ABCB4 may be involved in lipid efflux rather than in the maintenance of plasma membrane lipid asymmetry.

ABCC1 (MRP1) was identified initially as a conjugated glutathione transporter (131, 132). This enzyme was also shown to catalyze the efflux of short-chain NBD phospholipid analogs, but not endogenous lipids (such as PS), from the inner to the outer monolayer of the erythrocyte (57, 133, 134) and may account for the previously described efflux activity of these lipids (67, 112). Cells from an ABCC1<sup>-/-</sup> knockout mouse show no efflux of NBD-PC or -PS but possess functional flippase activity (135). Also located on the basolateral surface of LLC-PK1 cells, ABCC1 is capable of transporting the labeled sphingolipids, NBD-Glc-Cer and NBD-SM, to the exofacial side of the membrane (136). Extensive (24–48 h) treatment of erythrocytes with inhibitors of ABCC1 causes a disruption in the distribution of NBD-labeled and native choline phospholipids (PC and SM), but has no effect on PS or PE distribution (134). These data suggest that ABCC1 is an outwardly directed PC and sphingolipid-selective transporter and may play a role in the maintenance of choline and sphingolipid distribution in some cells.

It is interesting to note that not all ABC lipid transporters are floppases. ABCR is another ABC protein with lipid transport activity although it is a flippase, rather than a floppase. ABCR is present in retinal rod cell outer segment disc membranes and transports *N*-retinylidene-PE from the disc lumen to the cytofacial side of the membrane (137). This protein may serve to transport all trans-retinal to the cytoplasm for subsequent export. Consistent with this hypothesis, a deficiency in the ABCR gene leads to retinal degeneration (138, 139).

## SCRAMBLASES

Rather than assist in the maintenance of lipid asymmetry, scramblases function to degrade transbilayer phospholipid gradients by catalyzing energy-independent bidirectional transbilayer transport. Three scramblase activities have been reported; two are involved in dissipating lipid gradients in biogenic membranes and the third is activated by Ca<sup>2+</sup> in the plasma membrane of stimulated cells.

The ER scramblase was first described as a bidirectional transporter of PC and its metabolites (29, 140), and has been subsequently shown to be relatively nonspecific (30, 141). Transport activity has been reconstituted from crude (31, 140) and purified (32) ER membrane proteins. The previously described monohexosylsphingolipid transporter is also bidirectional and is selective for Glc-Cer or Gal-Cer (35, 36). Evidence has not been found for the activity of these transporters in the plasma membrane. Thus, they may serve only to redistribute newly synthesized lipids or lipid precursors in ER and Golgi membranes.

The Ca<sup>2+</sup> activated scramblase plays an important role in plasma membrane reorganization in response to cell stimulation, such as that accompanying platelet activation and apoptosis. The dissipation of transbilayer asymmetry


results in the exposure of PS on the surface of the cell, which activates blood clotting factors (10) and recognition of the cell by macrophages (9, 142, 143).

Putative scramblases have been purified from erythrocytes (144) and platelets (145). The erythrocyte protein (PLSCR1) has been cloned (146), and several additional isoforms have been discovered recently (147). However, blood cells from a mouse PLSCR1 knockout are not deficient in activation-induced lipid scrambling (148), suggesting that this protein may not be a scramblase. The presence on PLSCR1 of potential signaling motifs (149), protein phosphorylation sites (150, 151), and accumulation in plasma membrane lipid rafts (152) indicates that this protein may play a role in cellular signaling rather than, or in addition to, its role in lipid randomization.

The Ca<sup>2+</sup> activated scramblase is relatively nonspecific; it randomizes the distribution of all of the major classes of endogenous (153) and NBD-labeled phospholipids (154). Recent evidence indicates that the scramblase prefers glycerophospholipid analogs and is sensitive to head-group size (155). However, in general, this transporter is nonselective and serves primarily to express PS on the surface of activated cells.

## CONCLUSION

The interplay between these nonselective and selective transporters results in the maintenance and, in some cases, the generation of transbilayer lipid asymmetry. Nonselective scramblases in biogenic membranes equalize the distribution of newly synthesized lipids, and selective ATP-dependent transporters maintain the asymmetric distribution of lipids. Although the tissue distribution and the expression of some of these transporters is restricted, plasma membrane lipid asymmetry is maintained by selective inward flux of aminophospholipids and, perhaps in some cells, outward flux of choline- and sphingophospholipids. The concentration gradients generated by these transporters can be dissipated by a nonselective Ca<sup>2+</sup>-activated scramblase in response to cell stimulation.

These proteins have proven to be elusive and difficult to purify and reconstitute. Either they are intrinsically unstable or the process of purification removes an essential component. For example, it is possible that the functional unit of some of these transporters is multimeric and that protein-protein interactions are essential for the regulation of transport activity. Advances have been made in the identification of the proteins involved, but positive identification awaits successful reconstitution and demonstration of lipid transport activity. 

This work was supported by grants from the National Institutes of Health (GM-47230) and the American Heart Association.

## REFERENCES

1. Bretscher, M. S. 1972. Asymmetric lipid bilayer structure for biological membranes. *Nature (New Biol.)*. **236**: 11–12.
2. Op den Kamp, J. A. F. 1979. Lipid asymmetry in membranes. *Annu. Rev. Biochem.* **48**: 47–71.
3. Rothman, J. E., and J. Lenard. 1977. Membrane asymmetry. *Science*. **195**: 743–753.
4. Bretscher, M. S. 1972. Phosphatidyl-ethanolamine: Differential labelling in intact cells and cell ghosts of human erythrocytes by a membrane-impermeable reagent. *J. Mol. Biol.* **71**: 523–528.
5. Gascard, P., D. Tran, M. Sauvage, J.-C. Sulpice, K. Fukami, T. Takenawa, M. Claret, and F. Giraud. 1991. Asymmetric distribution of phosphoinositides and phosphatidic acid in the human erythrocyte membrane. *Biochim. Biophys. Acta*. **1069**: 27–36.
6. Bütikofer, P., Z. W. Lin, D. T.-Y. Chiu, and F. A. Kuypers. 1990. Transbilayer distribution and mobility of phosphatidylinositol in human red blood cells. *J. Biol. Chem.* **265**: 16035–16038.
7. Boon, J. M., and B. D. Smith. 2002. Chemical control of phospholipid distribution across bilayer membranes. *Med. Res. Rev.* **22**: 251–281.
8. Kolter, T., R. L. Proia, and K. Sandhoff. 2002. Combinatorial ganglioside biosynthesis. *J. Biol. Chem.* **277**: 25859–25862.
9. Fadok, V. A., D. R. Voelker, P. A. Campbell, J. J. Cohen, D. L. Bratton, and P. M. Henson. 1992. Exposure of phosphatidylserine on the surface of apoptotic lymphocytes triggers specific recognition and removal by macrophages. *J. Immunol.* **148**: 2207–2216.
10. Bevers, E. M., P. Comfurius, J. L. van Rijn, H. C. Hemker, and R. F. Zwaal. 1982. Generation of prothrombin-converting activity and the exposure of phosphatidylserine at the outer surface of platelets. *Eur. J. Biochem.* **122**: 429–436.
11. Lubin, B., D. Chiu, J. Bastacky, B. Roelofsen, and L. L. Van Deenen. 1981. Abnormalities in membrane phospholipid organization in sickled erythrocytes. *J. Clin. Invest.* **67**: 1643–1649.
12. Schlegel, R. A., L. McEvoy, and P. Williamson. 1985. Membrane phospholipid asymmetry and the adherence of loaded red blood cells. *Bibl. Haematol.* **51**: 150–156.
13. Wali, R. K., S. Jaffe, D. Kumar, N. Sorgente, and V. K. Kalra. 1987. Increased adherence of oxidant treated human and bovine erythrocytes to cultured endothelial cells. *J. Cell. Physiol.* **133**: 25–36.
14. Fadok, V. A., D. L. Bratton, and P. M. Henson. 2001. Phagocyte receptors for apoptotic cells: recognition, uptake, and consequences. *J. Clin. Invest.* **108**: 957–962.
15. Fadok, V. A., D. L. Bratton, S. C. Frasch, M. L. Warner, and P. M. Henson. 1998. The role of phosphatidylserine in recognition of apoptotic cells by phagocytes. *Cell Death Differ.* **5**: 551–562.
16. Wali, R. K., S. Jaffe, D. Kumar, and V. K. Kalra. 1988. Alterations in organization of phospholipids in erythrocytes as a factor in adherence to endothelial cells in diabetes mellitus. *Diabetes*. **37**: 104–111.
17. Wilson, M. J., K. Richter-Lowney, and D. L. Daleke. 1993. Hyperglycemia induces a loss of phospholipid asymmetry in human erythrocytes. *Biochemistry*. **32**: 11302–11310.
18. Pomorski, T., S. Hrafnisdottir, P. F. Devaux, and G. van Meer. 2001. Lipid distribution and transport across cellular membranes. *Semin. Cell Dev. Biol.* **12**: 139–148.
19. Borst, P., N. Zelcer, and A. van Helvoort. 2000. ABC transporters in lipid transport. *Biochim. Biophys. Acta*. **1486**: 128–144.
20. Borst, P., and R. O. Elferink. 2002. Mammalian abc transporters in health and disease. *Annu. Rev. Biochem.* **71**: 537–592.
21. Bevers, E. M., P. Comfurius, D. W. Dekkers, and R. F. Zwaal. 1999. Lipid translocation across the plasma membrane of mammalian cells. *Biochim. Biophys. Acta*. **1439**: 317–330.
22. Zwaal, R. F., and A. J. Schroit. 1997. Pathophysiologic implications of membrane phospholipid asymmetry in blood cells. *Blood*. **89**: 1121–1132.
23. Schlegel, R. A., and P. Williamson. 2001. Phosphatidylserine, a death knell. *Cell Death Differ.* **8**: 551–563.
24. Bell, R. M., L. M. Ballas, and R. A. Coleman. 1981. Lipid topogenesis. *J. Lipid Res.* **22**: 391–403.
25. Daleke, D. L., and W. H. Huestis. 1985. Incorporation and translocation of aminophospholipids in human erythrocytes. *Biochemistry*. **24**: 5406–5416.
26. Ferrell, J. E., Jr., K. J. Lee, and W. H. Huestis. 1985. Membrane bilayer balance and erythrocyte shape: a quantitative assessment. *Biochemistry*. **24**: 2849–2857.
27. Farge, E., and P. F. Devaux. 1992. Shape changes of giant liposomes induced by an asymmetric transmembrane distribution of phospholipids. *Biophys. J.* **61**: 347–357.
28. Zachowski, A. 1993. Phospholipids in animal eukaryotic membranes: transverse asymmetry and movement. *Biochem. J.* **294**: 1–14.
29. Bishop, W. R., and R. M. Bell. 1985. Assembly of the endoplasmic

- reticulum phospholipid bilayer: The phosphatidylcholine transporter. *Cell*. **42**: 51–60.
30. Buton, X., G. Morrot, P. Fellmann, and M. Seigneuret. 1996. Ultrafast glycerophospholipid-selective transbilayer motion mediated by a protein in the endoplasmic reticulum membrane. *J. Biol. Chem.* **271**: 6651–6657.
31. Hrafnisdottir, S., and A. K. Menon. 2000. Reconstitution and partial characterization of phospholipid flippase activity from detergent extracts of the *Bacillus subtilis* cell membrane. *J. Bacteriol.* **182**: 4198–4206.
32. Gummadi, S. N., and A. K. Menon. 2002. Transbilayer movement of dipalmitoylphosphatidylcholine in proteoliposomes reconstituted from detergent extracts of endoplasmic reticulum. Kinetics of transbilayer transport mediated by a single flippase and identification of protein fractions enriched in flippase activity. *J. Biol. Chem.* **277**: 25337–25343.
33. Holthuis, J. C., T. Pomorski, R. J. Raggars, H. Sprong, and G. Van Meer. 2001. The organizing potential of sphingolipids in intracellular membrane transport. *Physiol. Rev.* **81**: 1689–1723.
34. Lannert, H., K. Gorgas, I. Meissner, F. T. Wieland, and D. Jeckel. 1998. Functional organization of the Golgi apparatus in glycosphingolipid biosynthesis. Lactosylceramide and subsequent glycosphingolipids are formed in the lumen of the late Golgi. *J. Biol. Chem.* **273**: 2939–2946.
35. Burger, K. N., P. van der Bijl, and G. van Meer. 1996. Topology of sphingolipid galactosyltransferases in ER and Golgi: transbilayer movement of monohexosyl sphingolipids is required for higher glycosphingolipid biosynthesis. *J. Cell Biol.* **133**: 15–28.
36. Buton, X., P. Herve, J. Kubelt, A. Tannert, K. N. Burger, P. Fellmann, P. Muller, A. Herrmann, M. Seigneuret, and P. F. Devaux. 2002. Transbilayer movement of monohexosyl sphingolipids in endoplasmic reticulum and Golgi membranes. *Biochemistry*. **41**: 13106–13115.
37. Momers, C., A. J. Verkleij, J. de Gier, and L. L. M. van Deenen. 1979. The interaction of spectrin-actin and synthetic phospholipids. II. The interaction with phosphatidylserine. *Biochim. Biophys. Acta.* **551**: 271–281.
38. Cohen, A. M., S. C. Liu, J. Lawler, L. Derick, and J. Palek. 1988. Identification of the protein 4.1 binding site to phosphatidylserine vesicles. *Biochemistry*. **27**: 614–619.
39. Sato, S. B., and S. I. Ohnishi. 1983. Interaction of a peripheral protein of the erythrocyte membrane, band 4.1, with phosphatidylserine-containing liposomes and erythrocyte inside-out vesicles. *Eur. J. Biochem.* **130**: 19–25.
40. Meers, P., and T. Mealy. 1993. Relationship between annexin V tryptophan exposure, calcium, and phospholipid binding. *Biochemistry*. **32**: 5411–5418.
41. Manno, S., Y. Takakuwa, and N. Mohandas. 2002. Identification of a functional role for lipid asymmetry in biological membranes: Phosphatidylserine-skeletal protein interactions modulate membrane stability. *Proc. Natl. Acad. Sci. USA.* **99**: 1943–1948.
42. Maksymiw, R., S. F. Sui, H. Gaub, and E. Sackmann. 1987. Electrostatic coupling of spectrin dimers to phosphatidylserine containing lipid lamellae. *Biochemistry*. **26**: 2983–2990.
43. Gudi, S. R., A. Kumar, V. Bhakuni, S. M. Gokhale, and C. M. Gupta. 1990. Membrane skeleton-bilayer interaction is not the major determinant of membrane phospholipid asymmetry in human erythrocytes. *Biochim. Biophys. Acta.* **1023**: 63–72.
44. O'Toole, P. J., C. Wolfe, S. Latha, and R. J. Cherry. 1999. Rapid diffusion of spectrin bound to a lipid surface. *Biochim. Biophys. Acta.* **1419**: 64–70.
45. O'Toole, P. J., I. E. Morrison, and R. J. Cherry. 2000. Investigations of spectrin-lipid interactions using fluoresceinphosphatidylethanolamine as a membrane probe. *Biochim. Biophys. Acta.* **1466**: 39–46.
46. Calvez, J. Y., A. Zachowski, A. Herrmann, G. Morrot, and P. F. Devaux. 1988. Asymmetric distribution of phospholipids in spectrin-poor erythrocyte vesicles. *Biochemistry*. **27**: 5666–5670.
47. Kuypers, F. A., B. H. Lubin, M. Yee, P. F. Devaux, and D. Geldwerth. 1993. The distribution of erythrocyte phospholipids in hereditary spherocytosis demonstrates a minimal role for erythrocyte spectrin on phospholipid diffusion and asymmetry. *Blood*. **81**: 1051–1057.
48. de Jong, K., S. K. Larkin, S. Eber, P. F. Franck, B. Roelofsens, and F. A. Kuypers. 1999. Hereditary spherocytosis and elliptocytosis erythrocytes show a normal transbilayer phospholipid distribution. *Blood*. **94**: 319–325.
49. Kornberg, R. D., and H. M. McConnell. 1971. Inside-outside translocations of phospholipids in vesicle membranes. *Biochemistry*. **10**: 1111–1120.
50. Fuji, T., and A. Tamura. 1983. Dynamic behaviour of amphiphilic lipids to penetrate into membrane of intact erythrocytes and to induce change in the cell shape. *Biomed. Biochim. Acta.* **42**: S81–S85.
51. Middelkoop, E., B. H. Lubin, J. A. F. Op den Kamp, and B. Roelofsens. 1986. Flip-flop rates of individual molecular species of phosphatidylcholine in the human red cell membrane. *Biochim. Biophys. Acta.* **855**: 421–424.
52. Van Meer, G., and J. A. F. Op den Kamp. 1982. Transbilayer movement of various phosphatidylcholine species in intact human erythrocytes. *J. Cell. Biochem.* **19**: 193–204.
53. Wali, R. K., S. Jaffe, D. Kumar, and V. K. Kalra. 1988. Alterations in organization of phospholipids in erythrocytes as factor in adherence to endothelial cells in diabetes mellitus. *Diabetes*. **37**: 104–111.
54. Manodori, A. B., and F. A. Kuypers. 2002. Altered red cell turnover in diabetic mice. *J. Lab. Clin. Med.* **140**: 161–165.
55. Seigneuret, M., and P. F. Devaux. 1984. ATP-dependent asymmetric distribution of spin-labeled phospholipids in the erythrocyte membrane: relation to shape changes. *Proc. Natl. Acad. Sci. USA.* **81**: 3751–3755.
56. Connor, J., and A. J. Schroit. 1987. Determination of lipid asymmetry in human red cells by resonance energy transfer. *Biochemistry*. **26**: 5099–5105.
57. Sleight, R. G., and R. E. Pagano. 1985. Transbilayer movement of a fluorescent phosphatidylethanolamine analogue across the plasma membranes of cultured mammalian cells. *J. Biol. Chem.* **260**: 1146–1154.
58. Colleau, M., P. Herve, P. Fellmann, and P. F. Devaux. 1991. Transmembrane diffusion of fluorescent phospholipids in human erythrocytes. *Chem. Phys. Lipids.* **57**: 29–37.
59. Devaux, P. F., P. Fellmann, and P. Herve. 2002. Investigation on lipid asymmetry using lipid probes. Comparison between spin-labeled lipids and fluorescent lipids. *Chem. Phys. Lipids.* **116**: 115–134.
60. Maier, O., V. Oberle, and D. Hoekstra. 2002. Fluorescent lipid probes: some properties and applications (a review). *Chem. Phys. Lipids.* **116**: 3–18.
61. Daleke, D. L., and W. H. Huestis. 1989. Erythrocyte morphology reflects the transbilayer distribution of incorporated phospholipids. *J. Cell Biol.* **108**: 1375–1385.
62. Anzai, K., Y. Yoshioka, and Y. Kirino. 1993. Novel radioactive phospholipid probes as a tool for measurement of phospholipid translocation across biomembranes. *Biochim. Biophys. Acta.* **1151**: 69–75.
63. Tilley, L., S. Cribier, B. Roelofsens, J. A. F. Op den Kamp, and L. L. M. van Deenen. 1986. ATP-dependent translocation of aminophospholipids across the human erythrocyte membrane. *FEBS Lett.* **194**: 21–27.
64. Bitbol, M., P. Fellmann, A. Zachowski, and P. F. Devaux. 1987. Ion regulation of phosphatidylserine and phosphatidylethanolamine outside-inside translocation in human erythrocytes. *Biochim. Biophys. Acta.* **904**: 268–282.
65. Beleznyay, Z., A. Zachowski, P. F. Devaux, M. P. Navazo, and P. Ott. 1993. ATP-dependent aminophospholipid translocation in erythrocyte vesicles: stoichiometry of transport. *Biochemistry*. **32**: 3146–3152.
66. Connor, J., and A. J. Schroit. 1990. Aminophospholipid translocation in erythrocytes: evidence for the involvement of a specific transporter and an endofacial protein. *Biochemistry*. **29**: 37–43.
67. Connor, J., C. H. Pak, R. F. Zwaal, and A. J. Schroit. 1992. Bidirectional transbilayer movement of phospholipid analogs in human red blood cells. Evidence for an ATP-dependent and protein-mediated process. *J. Biol. Chem.* **267**: 19412–19417.
68. Connor, J., and A. J. Schroit. 1989. Transbilayer movement of phosphatidylserine in nonhuman erythrocytes: evidence that the aminophospholipid transporter is a ubiquitous membrane protein. *Biochemistry*. **28**: 9680–9685.
69. Sune, A., P. Bette-Bobillo, A. Bienvenue, P. Fellmann, and P. F. Devaux. 1987. Selective outside-inside translocation of aminophospholipids in human platelets. *Biochemistry*. **26**: 2972–2978.
70. Zachowski, A., A. Herrmann, A. Paraf, and P. F. Devaux. 1987. Phospholipid outside-inside translocation in lymphocyte plasma membranes is a protein-mediated phenomenon. *Biochim. Biophys. Acta.* **897**: 197–200.
71. Julien, M., J. F. Tournier, and J. F. Tocanne. 1993. Differences in the transbilayer and lateral motions of fluorescent analogs of phosphatidylcholine and phosphatidylethanolamine in the api-

- cal plasma membrane of bovine aortic endothelial cells. *Exp. Cell Res.* **208**: 387–397.
72. Martin, O. C., and R. E. Pagano. 1987. Transbilayer movement of fluorescent analogs of phosphatidylserine and phosphatidylethanolamine at the plasma membrane of cultured cells. Evidence for a protein-mediated and ATP-dependent process(es). *J. Biol. Chem.* **262**: 5890–5898.
  73. Pomorski, T., P. Muller, B. Zimmermann, K. Burger, P. F. Devaux, and A. Herrmann. 1996. Transbilayer movement of fluorescent and spin-labeled phospholipids in the plasma membrane of human fibroblasts: a quantitative approach. *J. Cell Sci.* **109**: 687–698.
  74. Cribier, S., J. Sainte-Marie, and P. F. Devaux. 1993. Quantitative comparison between aminophospholipid translocase activity in human erythrocytes and in K562 cells. *Biochim. Biophys. Acta.* **1148**: 85–90.
  75. Müller, P., T. Pomorski, S. Porwoli, R. Tauber, and A. Herrmann. 1996. Transverse movement of spin-labeled phospholipids in the plasma membrane of a hepatocytic cell line (HepG2): implications for biliary lipid secretion. *Hepatology.* **24**: 1497–1503.
  76. Müller, K., T. Pomorski, P. Muller, A. Zachowski, and A. Herrmann. 1994. Protein-dependent translocation of aminophospholipids and asymmetric transbilayer distribution of phospholipids in the plasma membrane of ram sperm cells. *Biochemistry.* **33**: 9968–9974.
  77. Zachowski, A., and Y. M. Gaudry-Talarmin. 1990. Phospholipid transverse diffusion in synaptosomes: evidence for the involvement of the aminophospholipid translocase. *J. Neurochem.* **55**: 1352–1356.
  78. Zachowski, A., J. P. Henry, and P. F. Devaux. 1989. Control of transmembrane lipid asymmetry in chromaffin granules by an ATP-dependent protein. *Nature.* **340**: 75–76.
  79. Pomorski, T., A. Herrmann, P. Muller, G. van Meer, and K. Burger. 1999. Protein-mediated inward translocation of phospholipids occurs in both the apical and basolateral plasma membrane domains of epithelial cells. *Biochemistry.* **38**: 142–150.
  80. Daleke, D. L., J. V. Lyles, E. Nemergut, and M. L. Zimmerman. 1995. Purification and substrate specificity of the human erythrocyte aminophospholipid transporter. *NATO ASI Ser. H.* **91**: 49–59.
  81. Morrot, G., P. Herve, A. Zachowski, P. Fellmann, and P. F. Devaux. 1989. Aminophospholipid translocase of human erythrocytes: phospholipid substrate specificity and effect of cholesterol. *Biochemistry.* **28**: 3456–3462.
  82. Zachowski, A., E. Favre, S. Cribier, P. Herve, and P. F. Devaux. 1986. Outside-inside translocation of aminophospholipids in the human erythrocyte membrane is mediated by a specific enzyme. (Published erratum appears in *Biochemistry.* 1986. **18**:**25**(**23**): 7788) *Biochemistry.* **25**: 2585–2590.
  83. Johnson, J. E., M. L. Zimmerman, D. L. Daleke, and A. C. Newton. 1998. Lipid structure and not membrane structure is the major determinant in the regulation of protein kinase C by phosphatidylserine. *Biochemistry.* **37**: 12020–12025.
  84. Hoffmann, P. R., A. M. deCathelineau, C. A. Ogden, Y. Leverrier, D. L. Bratton, D. L. Daleke, A. J. Ridley, V. A. Fadok, and P. M. Henson. 2001. Phosphatidylserine (PS) induces PS receptor-mediated macrophocytosis and promotes clearance of apoptotic cells. *J. Cell Biol.* **155**: 649–659.
  85. Fadok, V. A., A. de Cathelineau, D. L. Daleke, P. M. Henson, and D. L. Bratton. 2001. Loss of phospholipid asymmetry and surface exposure of phosphatidylserine is required for phagocytosis of apoptotic cells by macrophages and fibroblasts. *J. Biol. Chem.* **276**: 1071–1077.
  86. Hall, M. P., and W. H. Huestis. 1994. Phosphatidylserine head-group diastereomers translocate equivalently across human erythrocyte membranes. *Biochim. Biophys. Acta.* **1190**: 243–247.
  87. Puri, V., and C. M. Gupta. 1998. Out-to-in translocation of butanetriol-containing phospholipid analogs in human erythrocyte membrane. *Biochim. Biophys. Acta.* **1373**: 59–66.
  88. Fellmann, P., P. Herve, T. Pomorski, P. Muller, D. Geldwerth, A. Herrmann, and P. F. Devaux. 2000. Transmembrane movement of diether phospholipids in human erythrocytes and human fibroblasts. *Biochemistry.* **39**: 4994–5003.
  89. Schroit, A. J., J. Madsen, and A. E. Ruoho. 1987. Radioiodinated, photoactivatable phosphatidylcholine and phosphatidylserine: transfer properties and differential photoreactive interaction with human erythrocyte membrane proteins. *Biochemistry.* **26**: 1812–1819.
  90. Loh, R. K., and W. H. Huestis. 1993. Human erythrocyte membrane lipid asymmetry: transbilayer distribution of rapidly diffusing phosphatidylserines. *Biochemistry.* **32**: 11722–11726.
  91. Zachowski, A., P. Fellmann, P. Herve, and P. F. Devaux. 1987. Labeling of human erythrocyte membrane proteins by photoactivatable radioiodinated phosphatidylcholine and phosphatidylserine. A search for the aminophospholipid translocase. *FEBS Lett.* **223**: 315–320.
  92. Nichols, J. W. 2002. Internalization and trafficking of fluorescently labeled phospholipids in yeast. *Semin. Cell Dev. Biol.* **13**: 179–184.
  93. Grant, A. M., P. K. Hanson, L. Malone, and J. W. Nichols. 2001. NBD-labeled phosphatidylcholine and phosphatidylethanolamine are internalized by transbilayer transport across the yeast plasma membrane. *Traffic.* **2**: 37–50.
  94. Daleke, D. L., and J. V. Lyles. 2000. Identification and purification of aminophospholipid flippases. *Biochim. Biophys. Acta.* **1486**: 108–127.
  95. Morrot, G., A. Zachowski, and P. F. Devaux. 1990. Partial purification of the human erythrocyte Mg<sup>2+</sup>-ATPase. A candidate aminophospholipid translocase. *FEBS Lett.* **266**: 29–32.
  96. Auland, M. E., B. D. Roufogalis, P. E. Devaux, and A. Zachowski. 1994. Reconstitution of ATP-dependent aminophospholipid translocation in proteoliposomes. *Proc. Natl. Acad. Sci. USA.* **91**: 10938–10942.
  97. Moriyama, Y., and N. Nelson. 1988. Purification and properties of a vanadate- and N-ethylmaleimide-sensitive ATPase from chromaffin granule membranes. *J. Biol. Chem.* **263**: 8521–8527.
  98. Moriyama, Y., N. Nelson, M. Maeda, and M. Futai. 1991. Vanadate-sensitive ATPase from chromaffin granule membranes formed a phosphoenzyme intermediate and was activated by phosphatidylserine. *Arch. Biochem. Biophys.* **286**: 252–256.
  99. Tang, X., M. S. Halleck, R. A. Schlegel, and P. Williamson. 1996. A subfamily of P-type ATPases with aminophospholipid transporting activity. [published erratum appears in *Science* 1996 Dec 6;274(5293):1597] *Science.* **272**: 1495–1497.
  100. Ding, J., Z. Wu, B. P. Crider, Y. Ma, X. Li, C. Slaughter, L. Gong, and X. S. Xie. 2000. Identification and functional expression of four isoforms of ATPase II, the putative aminophospholipid translocase. Effect of isoform variation on the ATPase activity and phospholipid specificity. *J. Biol. Chem.* **275**: 23378–23386.
  101. Mouro, I., M. S. Halleck, R. A. Schlegel, M. G. Mattei, P. Williamson, A. Zachowski, P. Devaux, J. P. Cartron, and Y. Colin. 1999. Cloning, expression, and chromosomal mapping of a human ATPase II gene, member of the third subfamily of P-type ATPases and orthologous to the presumed bovine and murine aminophospholipid translocase. *Biochem. Biophys. Res. Commun.* **257**: 333–339.
  102. Halleck, M. S., D. Pradhan, C. Blackman, C. Berkes, P. Williamson, and R. A. Schlegel. 1998. Multiple members of a third subfamily of P-type ATPases identified by genomic sequences and ESTs. *Genome Res.* **8**: 354–361.
  103. Axelsen, K. B., and M. G. Palmgren. 1998. Evolution of substrate specificities in the P-type ATPase superfamily. *J. Mol. Evol.* **46**: 84–101.
  104. Ripmaster, T. L., G. P. Vaughn, and J. L. Woolford, Jr. 1993. DRS1 to DRS7, novel genes required for ribosome assembly and function in *Saccharomyces cerevisiae*. *Mol. Cell Biol.* **13**: 7901–7912.
  105. Marx, U., T. Polakowski, T. Pomorski, C. Lang, H. Nelson, N. Nelson, and A. Herrmann. 1999. Rapid transbilayer movement of fluorescent phospholipid analogues in the plasma membrane of endocytosis-deficient yeast cells does not require the Drs2 protein. *Eur. J. Biochem.* **263**: 254–263.
  106. Gomes, E., M. K. Jakobsen, K. B. Axelsen, M. Geisler, and M. G. Palmgren. 2000. Chilling tolerance in Arabidopsis involves ALA1, a member of a new family of putative aminophospholipid translocases. *Plant Cell.* **12**: 2441–2454.
  107. Bull, L. N., M. J. van Eijk, L. Pawlikowska, J. A. DeYoung, J. A. Juijn, M. Liao, L. W. Klomp, N. Lomri, R. Berger, B. F. Schar Schmidt, A. S. Knisely, R. H. Houwen, and N. B. Freimer. 1998. A gene encoding a P-type ATPase mutated in two forms of hereditary cholestasis. *Nat. Genet.* **18**: 219–224.
  108. Siegmund, A., A. Grant, C. Angeletti, L. Malone, J. W. Nichols, and H. K. Rudolph. 1998. Loss of Drs2p does not abolish transfer of fluorescence-labeled phospholipids across the plasma membrane of *Saccharomyces cerevisiae*. *J. Biol. Chem.* **273**: 34399–34405.
  109. Paterson, J., M. Zimmerman, J. Lyles, C-W. Lee, M. Halleck, P. Williamson, R. Schlegel, and D. L. Daleke. 2001. Lipid specificity of candidate flippases (Abstract). *Biophys. J.* **80**: 256.



110. Meguro, M., A. Kashiwagi, K. Mitsuya, M. Nakao, I. Kondo, S. Saitoh, and M. Oshimura. 2001. A novel maternally expressed gene, ATP10C, encodes a putative aminophospholipid translocase associated with Angelman syndrome. *Nat. Genet.* **28**: 19–20.
111. Dhar, M., L. S. Webb, L. Smith, L. Hauser, D. Johnson, and D. B. West. 2000. A novel ATPase on mouse chromosome 7 is a candidate gene for increased body fat. *Physiol. Genomics.* **4**: 93–100.
112. Bitbol, M., and P. F. Devaux. 1988. Measurement of outward translocation of phospholipids across human erythrocyte membrane. *Proc. Natl. Acad. Sci. USA.* **85**: 6783–6787.
113. Prasad, R., S. L. Panwar, and Smriti. 2002. Drug resistance in yeasts—an emerging scenario. *Adv. Microb. Physiol.* **46**: 155–201.
114. Smriti, S. S., Krishnamurthy, and R. Prasad. 1999. Membrane fluidity affects functions of Cdr1p, a multidrug ABC transporter of *Candida albicans*. *FEMS Microbiol. Lett.* **173**: 475–81.
115. Zhou, Z., K. A. White, A. Polissi, C. Georgopoulos, and C. R. Raetz. 1998. Function of *Escherichia coli* MsbA, an essential ABC family transporter, in lipid A and phospholipid biosynthesis. *J. Biol. Chem.* **273**: 12466–12475.
116. Doerrler, W. T., and C. R. Raetz. 2002. ATPase activity of the MsbA lipid flippase of *Escherichia coli*. *J. Biol. Chem.* **277**: 36697–36705.
117. Rust, S., M. Rosier, H. Funke, J. Real, Z. Amoura, J. C. Piette, J. F. Deleuze, H. B. Brewer, N. Duverger, P. Deneffe, and G. Assmann. 1999. Tangier disease is caused by mutations in the gene encoding ATP-binding cassette transporter 1. *Nat. Genet.* **22**: 352–355.
118. Bodzioch, M., E. Orso, J. Klucken, T. Langmann, A. Bottcher, W. Diederich, W. Drobnik, S. Barlage, C. Buchler, M. Porsch-Ozcurumez, W. E. Kaminski, H. W. Hahmann, K. Oette, G. Rothe, C. Aslanidis, K. J. Lackner, and G. Schmitz. 1999. The gene encoding ATP-binding cassette transporter 1 is mutated in Tangier disease. *Nat. Genet.* **22**: 347–351.
119. Brooks-Wilson, A., M. Marcil, S. M. Clec, L. H. Zhang, K. Roomp, M. van Dam, L. Yu, C. Brewer, J. A. Collins, H. O. Molhuizen, O. Loubser, B. F. Ouelette, K. Fichter, K. J. Ashbourne-Excoffon, C. W. Sensen, S. Scherer, S. Mott, M. Denis, D. Martindale, J. Frohlich, K. Morgan, B. Koop, S. Pimstone, J. J. Kastelein, and M. R. Hayden. 1999. Mutations in ABC1 in Tangier disease and familial high-density lipoprotein deficiency. *Nat. Genet.* **22**: 336–345.
120. Hamon, Y., C. Broccardo, O. Chambenoit, M. F. Luciani, F. Toti, S. Chaslin, J. M. Freyssinet, P. F. Devaux, J. McNeish, D. Marguet, and G. Chimini. 2000. ABC1 promotes engulfment of apoptotic cells and transbilayer redistribution of phosphatidylserine. *Nat. Cell Biol.* **2**: 399–406.
121. Smith, J. D., C. Waelde, A. Horwitz, and P. Zheng. 2002. Evaluation of the role of phosphatidylserine translocase activity in ABCA1-mediated lipid efflux. *J. Biol. Chem.* **277**: 17797–17803.
122. Luciani, M. F., and G. Chimini. 1996. The ATP binding cassette transporter ABC1, is required for the engulfment of corpses generated by apoptotic cell death. *EMBO J.* **15**: 226–235.
123. van Helvoort, A., A. J. Smith, H. Sprong, I. Fritzsche, A. H. Schinkel, P. Borst, and G. van Meer. 1996. MDR1 P-glycoprotein is a lipid translocase of broad specificity, while MDR3 P-glycoprotein specifically translocates phosphatidylcholine. *Cell.* **87**: 507–517.
124. Bosch, I., K. Dunussi-Joannopoulos, R. L. Wu, S. T. Furlong, and J. Croop. 1997. Phosphatidylcholine and phosphatidylethanolamine behave as substrates of the human MDR1 P-glycoprotein. *Biochemistry.* **36**: 5685–5694.
125. Raggars, R. J., I. Vogels, and G. van Meer. 2001. Multidrug-resistance P-glycoprotein (MDR1) secretes platelet-activating factor. *Biochem. J.* **357**: 859–865.
126. Romsicki, Y., and F. J. Sharom. 2001. Phospholipid flippase activity of the reconstituted P-glycoprotein multidrug transporter. *Biochemistry.* **40**: 6937–6947.
127. Smit, J. J., A. H. Schinkel, R. P. Oude Elferink, A. K. Groen, E. Wagenaar, L. van Deemter, C. A. Mol, R. Ottenhoff, N. M. van der Lugt, and M. A. van Roon. 1993. Homozygous disruption of the murine *mdr2* P-glycoprotein gene leads to a complete absence of phospholipid from bile and to liver disease. *Cell.* **75**: 451–462.
128. Ruetz, S., and P. Gros. 1994. Phosphatidylcholine translocase: a physiological role for the *mdr2* gene. *Cell.* **77**: 1071–1081.
129. Nies, A. T., Z. Gatmaitan, and I. M. Arias. 1996. ATP-dependent phosphatidylcholine translocation in rat liver canalicular plasma membrane vesicles. *J. Lipid Res.* **37**: 1125–1136.
130. Smit, J. J., A. H. Schinkel, C. A. Mol, D. Majoor, W. J. Mooi, A. P. Jongasma, C. R. Lincke, and P. Borst. 1994. Tissue distribution of the human MDR3 P-glycoprotein. *Lab. Invest.* **71**: 638–649.
131. Deeley, R. G., and S. P. Cole. 1997. Function, evolution and structure of multidrug resistance protein (MRP). *Semin. Cancer Biol.* **8**: 193–204.
132. Pulaski, L., G. Jedlitschky, I. Leier, U. Buchholz, and D. Keppler. 1996. Identification of the multidrug-resistance protein (MRP) as the glutathione-S-conjugate export pump of erythrocytes. *Eur. J. Biochem.* **241**: 644–648.
133. Kamp, D., and C. W. Haest. 1998. Evidence for a role of the multidrug resistance protein (MRP) in the outward translocation of NBD-phospholipids in the erythrocyte membrane. *Biochim. Biophys. Acta.* **1372**: 91–101.
134. Dekkers, D. W., P. Comfurius, R. G. van Gool, E. M. Bevers, and R. F. Zwaal. 2000. Multidrug resistance protein 1 regulates lipid asymmetry in erythrocyte membranes. *Biochem. J.* **350**: 531–535.
135. Dekkers, D. W., P. Comfurius, A. J. Schroit, E. M. Bevers, and R. F. Zwaal. 1998. Transbilayer movement of NBD-labeled phospholipids in red blood cell membranes: outward-directed transport by the multidrug resistance protein 1 (MRP1). *Biochemistry.* **37**: 14833–14837.
136. Raggars, R. J., A. van Helvoort, R. Evers, and G. van Meer. 1999. The human multidrug resistance protein MRP1 translocates sphingolipid analogs across the plasma membrane. *J. Cell Sci.* **112**: 415–422.
137. Weng, J., N. L. Mata, S. M. Azarian, R. T. Tzekov, D. G. Birch, and G. H. Travis. 1999. Insights into the function of Rim protein in photoreceptors and etiology of Stargardt's disease from the phenotype in *abc* knockout mice. *Cell.* **98**: 13–23.
138. Allikmets, R., N. F. Shroyer, N. Singh, J. M. Seddon, R. A. Lewis, P. S. Bernstein, A. Peiffer, N. A. Zabriskie, Y. Li, A. Hutchinson, M. Dean, J. R. Lupski, and M. Leppert. 1997. Mutation of the Stargardt disease gene (ABCR) in age-related macular degeneration. *Science.* **277**: 1805–1807.
139. Allikmets, R., N. Singh, H. Sun, N. F. Shroyer, A. Hutchinson, A. Chidambaram, B. Gerrard, L. Baird, D. Stauffer, A. Peiffer, A. Rattner, P. Smallwood, Y. Li, K. L. Anderson, R. A. Lewis, J. Nathans, M. Leppert, M. Dean, and J. R. Lupski. 1997. A photoreceptor cell-specific ATP-binding transporter gene (ABCR) is mutated in recessive Stargardt macular dystrophy. *Nat. Genet.* **15**: 236–246.
140. Backer, J. M., and E. A. Dawidowicz. 1985. Membrane assembly: evidence for a phospholipid “flippase” in rat liver microsomes (Abstract). *J. Cell Biol.* **101**: 261.
141. Herrmann, A., A. Zachowski, and P. F. Devaux. 1990. Protein-mediated phospholipid translocation in the endoplasmic reticulum with a low lipid specificity. *Biochemistry.* **29**: 2023–2027.
142. McEvoy, L., P. Williamson, and R. A. Schlegel. 1986. Membrane phospholipid asymmetry as a determinant of erythrocyte recognition by macrophages. *Proc. Natl. Acad. Sci. USA.* **83**: 3311–3315.
143. Connor, J., C. C. Pak, and A. J. Schroit. 1994. Exposure of phosphatidylserine in the outer leaflet of human red blood cells. Relationship to cell density, cell age, and clearance by mononuclear cells. *J. Biol. Chem.* **269**: 2399–2404.
144. Bassé, F., J. G. Stout, P. J. Sims, and T. Wiedmer. 1996. Isolation of an erythrocyte membrane protein that mediates  $Ca^{2+}$ -dependent transbilayer movement of phospholipid. *J. Biol. Chem.* **271**: 17205–17210.
145. Comfurius, P., P. Williamson, E. F. Smeets, R. A. Schlegel, E. M. Bevers, and R. F. Zwaal. 1996. Reconstitution of phospholipid scramblase activity from human blood platelets. *Biochemistry.* **35**: 7631–7634.
146. Zhou, Q., J. Zhao, J. G. Stout, R. A. Luhm, T. Wiedmer, and P. J. Sims. 1997. Molecular cloning of human plasma membrane phospholipid scramblase. A protein mediating transbilayer movement of plasma membrane phospholipids. *J. Biol. Chem.* **272**: 18240–18244.
147. Wiedmer, T., Q. Zhou, D. Y. Kwoh, and P. J. Sims. 2000. Identification of three new members of the phospholipid scramblase gene family. *Biochim. Biophys. Acta.* **1467**: 244–253.
148. Zhou, Q., J. Zhao, T. Wiedmer, and P. J. Sims. 2002. Normal hemostasis but defective hematopoietic response to growth factors

in mice deficient in phospholipid scramblase 1. *Blood*. **99**: 4030–4038.

149. Sims, P. J., and T. Wiedmer. 2001. Unraveling the mysteries of phospholipid scrambling. *Thromb. Haemost.* **86**: 266–275.
150. Sun, J., J. Zhao, M. A. Schwartz, J. Y. Wang, T. Wiedmer, and P. J. Sims. 2001. c-Abl tyrosine kinase binds and phosphorylates phospholipid scramblase 1. *J. Biol. Chem.* **276**: 28984–28990.
151. Frasnich, S. C., P. M. Henson, J. M. Kailey, D. A. Richter, M. S. Janes, V. A. Fadok, and D. L. Bratton. 2000. Regulation of phospholipid scramblase activity during apoptosis and cell activation by protein kinase C $\delta$ . *J. Biol. Chem.* **275**: 23065–23073.
152. Sun, J., M. Nanjundan, L. J. Pike, T. Wiedmer, and P. J. Sims. 2002. Plasma membrane phospholipid scramblase 1 is enriched in lipid rafts and interacts with the epidermal growth factor receptor. *Biochemistry*. **41**: 6338–6345.
153. Bevers, E. M., P. Comfurius, and R. F. Zwaal. 1983. Changes in membrane phospholipid distribution during platelet activation. *Biochim. Biophys. Acta*. **736**: 57–66.
154. Williamson, P., A. Kulick, A. Zachowski, R. A. Schlegel, and P. F. Devaux. 1992. Ca<sup>2+</sup> induces transbilayer redistribution of all major phospholipids in human erythrocytes. *Biochemistry*. **31**: 6355–6360.
155. Dekkers, D. W., P. Comfurius, E. M. Bevers, and R. F. Zwaal. 2002. Comparison between Ca<sup>2+</sup>-induced scrambling of various fluorescently labelled lipid analogues in red blood cells. *Biochem. J.* **362**: 741–747.

Adiconis, X.	2365	Jørgensen, C.	2320	Ricart-Jané, D.	2250
Asselberghs, S.	2349	Julve, J.	2250	Robert, M. Q.	2250
Astrup, A.	2234	Kasbo, J.	2297	Romijn, J. A.	2270
Ausman, L. M.	2304	Kellner-Weibel, G.	2331	Rothblat, G. H.	2331
Barnes, S.	2242	Kim, J. Y.	2356	Rudel, L. L.	2331
Bassi, A.	2374	Kim, O. Y.	2356	Rustan, A. C.	2320
Bazan, N. G.	2221	Kisilevsky, R.	2257	Ryu, H. J.	2356
Berge, R. K.	2320	Kitchens, R. L.	2339	Shiotsuki, H.	2400
Bouchard, G.	2297	Kristiansen, K.	2320	Siddiqui, N.	2406
Brockman, H. L.	2278	Lafont, H.	2297	Silwood, C. J. L.	2406
Casteels, M.	2349	Lai, C-Q.	2365	Sim, J.	2406
Chanussot, F.	2297	Larsen, T. M.	2234	Song, S. H.	2356
Chew, S. K.	2365	Lee, J. H.	2356	Spector, A. A.	2311
Chijiwa, K.	2400	Leka, L. S.	2304	Stranieri, C.	2374
Corrocher, R.	2374	Lichtenstein, A. H.	2304	Sueta, H.	2400
Cutter, J.	2365	Llobera, M.	2250	Sumiyoshi, M.	2278
Dahlmans, V. E. H.	2270	Lowe, M. E.	2278	Tai, E-S.	2365
Dobрева, I.	2382	Maassen, J. A.	2270	Takaku, T.	2278
Domann, F. E.	2311	Madsen, L.	2320	Tam, S. P.	2257
Domingo, N.	2297	Maeda, Y.	2400	Tan, C. E.	2365
Eto, T-A.	2400	Mannaerts, G. P.	2349	Tanaka, S-I.	2400
Falany, C. N.	2242	Martinelli, N.	2374	Teusink, B.	2270
Febbraio, M.	2270	Meydani, S. N.	2304	Thompson, P. A.	2339
Foulon, V.	2349	Momsen, W. E.	2278	Thorngate, F. E.	2331
Friso, S.	2374	Mooser, V.	2382	Toms, H.	2406
Frøyland, L.	2320	Morton, R. E.	2287	Toubro, S.	2234
Furstenberger, G.	2320	Muller-Decker, K.	2320	Trabetti, E.	2374
Galan, X.	2250	Munford, R. S.	2339	Tsujita, T.	2278
Geens, W.	2349	Nwankwo, J. O.	2311	Tuchweber, B.	2297
Girelli, D.	2374	O'Keefe, G. E.	2339	Une, M.	2400
Goudriaan, J. R.	2270	Olivieri, O.	2374	Van Veldhoven, P. P.	2349
Greene, D. J.	2287	Ordovas, J. M.	2356, 2365	Voshol, P. J.	2270
Grootveld, M.	2406	Ota, Y.	2400	Waeber, G.	2382
Han, S. N.	2304	Ouwens, D. M.	2270	Widmann, C.	2382
Havekes, L. M.	2270	Peinado-Onsurbe, J.	2250	Williams, D. L.	2331
He, D.	2242	Perwaiz, S.	2297	Yancey, P. G.	2331
Iles, R. A.	2406	Petersen, R. K.	2320	Yiu, S. S.	2391
Imig, J. D.	2391	Pignatti, P. F.	2374	Yousef, I. M.	2297
Inscho, E. W.	2391	Pizzolo, F.	2374	Zhao, X.	2391
James, R. W.	2382	Ramírez, I.	2250	Zhu, Y-P.	2365
Jang, Y.	2356				

## ERRATA

In the article "Regulation of transbilayer plasma membrane phospholipid asymmetry" by David L. Daleke, published in the February 2003 issue of the *Journal of Lipid Research* (Volume 44, pages 233–242), in Fig. 2 the stereochemistry of the glycerol C2 position is not rendered correctly. The stereochemistry described in the text (*sn*-1,2-glycerol configuration) is shown in the corrected Fig. 2 below.

